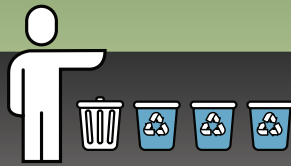


A Tale of Two Landfills

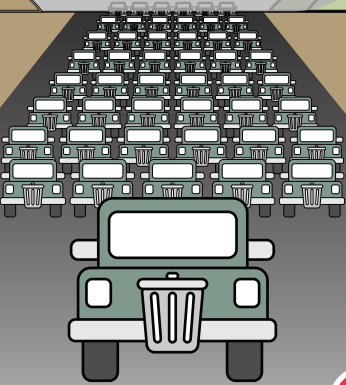


Non-Recycler
generates **4.80 pounds**
of trash per day
recycles 0% of their discards

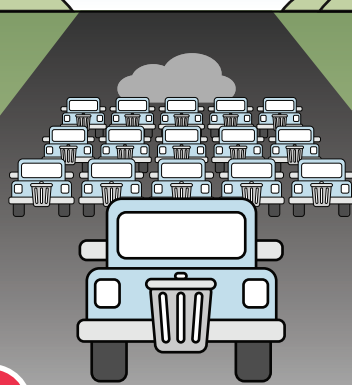


Avid Recycler
generates just
1.12 pounds per day
recycles 75% of their discards

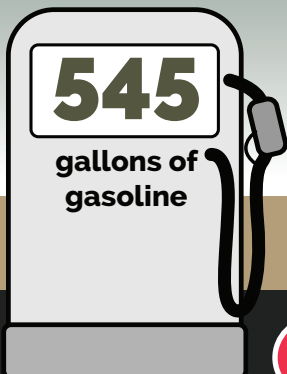
That's
64
full-sized pickup trucks
of **TRASH** to the landfill
in their **lifetime**



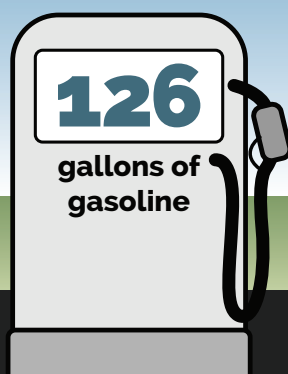
They only send
16
pickups of **TRASH**
in their **lifetime**



That's the equivalent to
the emissions of using

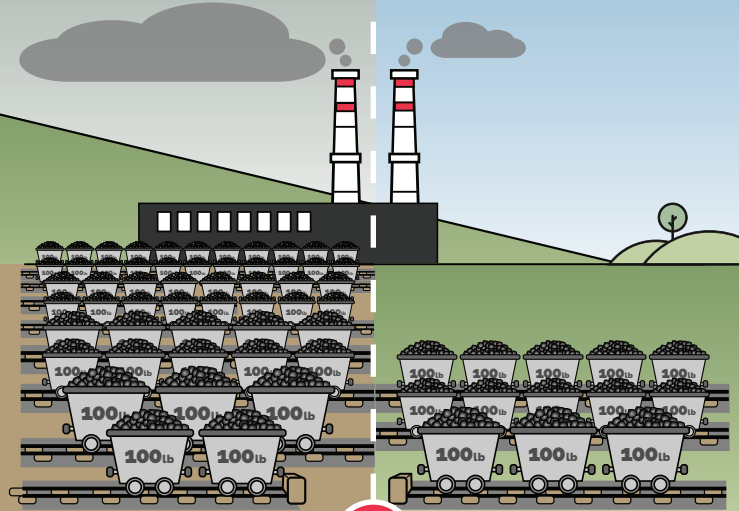


That's the
equivalent of just

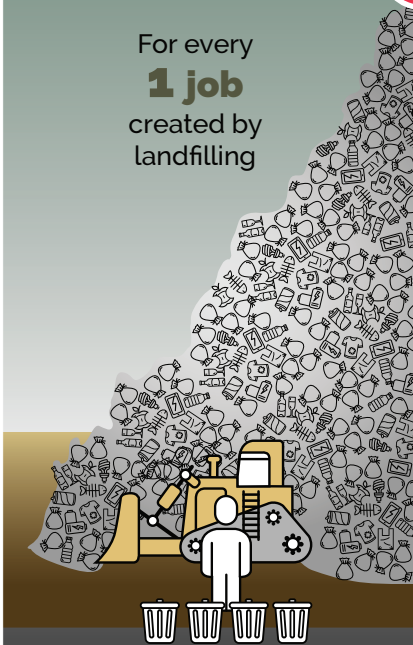


Or,
5300
pounds of coal

Or, only
1300
pounds of coal



For every
1 job
created by
landfilling



9 jobs
could be created
through recycling

