

ULSTER COUNTY RESOURCE RECOVERY AGENCY

RESOLUTION NO. 2553

RE: Authorizing and Approving the Purchase of a Caterpillar Skid Steer Loader, Caterpillar Wheel Loader and Caterpillar Excavator

WHEREAS, The Ulster County Resource Recovery Agency (the “Agency”) is engaged in Solid Waste Management and Recycling in Ulster County, and

WHEREAS, the Agency requires a new Caterpillar Skid Steer (Exhibit A), Caterpillar Wheel Loader (Exhibit B) and Caterpillar Excavator (Exhibit C) to perform the work required to carry out the duties of Solid Waste Management, and

WHEREAS, the Agency staff has recommended the purchase of the equipment through the Sourcewell Statewide Contract in compliance with the New York State bidding as the Agency is allowed to piggyback under New York State General Municipal Law Section 103; see attached exhibits describing the equipment to be purchased, and

NOW, THEREFORE, BE IT

RESOLVED, that the Ulster County Resource Recovery Agency does hereby authorize and approve the purchase of the equipment as described in the attached documents, and be it

FURTHER RESOLVED, that the Executive Director and Agency staff are hereby authorized to take all steps necessary to complete the purchase of the Equipment, and be it,

FURTHER RESOLVED, that this Resolution shall take effect immediately.

Moved by: _____ Seconded by: _____

Vote: Ayes _____ Nays _____ Absent _____

Date: December 27, 2021

Financial Impact: \$574,000



November 15, 2021

ULSTER COUNTY RESOURCE RECOVERY

PO BOX 6219
KINGSTON, New York 12402

Charlie Wittaker,

Thank you for this opportunity to quote Caterpillar products for your business needs. We are pleased to quote the following for your purchase consideration.

One (1) New Caterpillar Inc Model: 272D3 Skid Steer Loader with all standard equipment in addition to the additional specifications listed below:

STOCK NUMBER: **SERIAL NUMBER:** **YEAR:** **SMU:**

We appreciate your interest in H.O. Penn Machinery Co. Inc. and Caterpillar products for your business needs. This quotation is valid for 30 days, and is subject to prior sale. If there are any questions, please do not hesitate to contact me.

Regards,

Scott Cortright
Machine Sales Representative
scortright@hopenn.com
(845) 206-2557

Exhibit A

One (1) New Caterpillar Inc Model: 272D3 Skid Steer Loader with all standard equipment in addition to the additional specifications listed below:

STANDARD EQUIPMENT

POWERTRAIN -Cat C3.8 turbo aftercooled diesel engine --Gross horsepower per SAE J1349 -98 hp (73 kW) @ 2400 RPM --Electric fuel priming pump --Air inlet heater starting aid --Liquid cooled, direct injection -Air cleaner, dual element, radial seal -S-O-S sampling valve, hydraulic oil -Filter, cartridge type, hydraulic -Filters, canister type, fuel -and water separator -Radiator / hydraulic oil -cooler (side-by-side) -Spring applied, hydraulically released, -parking brakes -Hydrostatic transmission -Four wheel chain drive -

HYDRAULICS -CONTROLS: -Electro/hydraulic implement control -Electro/hydraulic hydrostatic -transmission control

ELECTRICAL -12 volt electrical system -100 ampere alternator -Ignition key start / stop / aux switch -Lights: --Gauge backlighting --Two rear tail lights --Dome light -Backup alarm -Electrical outlet, beacon -

OPERATOR ENVIRONMENT -Operator warning system indicators: --Air filter restriction --Alternator output --Armrest raised / operator out of seat --Engine coolant temperature --Engine oil pressure --Air inlet heater activation --Hydraulic filter restriction --Hydraulic oil temperature --Park brake engages --Engine emission system -Gauges: DEF level, fuel level, hour -meter and tachometer -Storage compartment with netting -Adjustable vinyl seat -Ergonomic contoured armrest -Adjustable joystick controls -Control interlock system, when operator -leaves seat or armrest raised : --Hydraulic system disables --Hydrostatic transmission disables --Parking brake engages -ROPS Cab, open, tilt up -Anti-theft security system with 50 user -code capability -FOPS, Level I -Top and rear windows -Floormat -Interior rear view mirror -12V electric socket -Horn -Hand (dial) throttle electronic

FRAMES -Lift linkage, vertical path -Chassis, one piece welded -Machine tie down points (6) -Belly pan cleanout -Support, lift arm -Cast rear bumper -Ventilated rear door with integrated -sealing

OTHER STANDARD EQUIPMENT -Engine enclosure - lockable -Extended life antifreeze (-37C, -34F) -Coupler, mechanical -Hydraulic oil level sight gauge -Radiator coolant level sight gauge -Radiator expansion bottle -Cat tough guard hose -Heavy duty flat faced quick disconnects -with integrated pressure release -Split d-Ring to route work tool hoses -along side of left lift arm -Variable speed hydraulic cooling fan -Per SAE J818-2007 and EN 474-3:2006 and -ISO 14397-1:2007

MACHINE SPECIFICATIONS

272D3 SKID STEER LOADER	512-4272
LANE 3 ORDER	0P-9003
CAB PACKAGE, ULTRA	588-9097
HYDRAULICS, PERFORMANCE, (H3)	512-4414
POWERTRAIN, TWO SPEED	512-3371
RIDE CONTROL, NONE	512-3490
BATTERY,EXTRA HD,DISC,1000 CCA	568-5612
LIGHTS, LED	495-1671
REAR LIGHTS	356-6082
ROPS, ENCLOSED WITH A/C (C3)	512-3368
SEAT,AIR SUSPENSION,CLOTH,HEAT	536-9738
DOOR, CAB, POLYCARBONATE	539-8061

SEAT BELT, 2"	542-6994
RADIO, AM/FM, BLUETOOTH	345-6180
DISPLAY, ADVANCED, LCD, CAMERA	465-3705
PRODUCT LINK, CELLULAR PL243	566-7115
FAN, COOLING, DEMAND, REVERSING	579-8782
TIRES, 33X6X11 CAT FLEX SOLID	568-4636
QUICK COUPLER, MANUAL	345-4910
CERTIFICATION ARR, P65	563-1163
INSTRUCTIONS, ANSI, USA	512-4282
SERIALIZED TECHNICAL MEDIA KIT	421-8926
SHIPPING/STORAGE PROTECTION	0P-2266
FILM, TWO SPEED W/HIGH FLOW XPS	568-4704
FILM, SELF LEVEL, ANSI	435-9238
HEATER, ENGINE COOLANT, 120V	345-3556
ROTATING BEACON	309-1325
COUNTERWEIGHT, MACHINE, EXTERNAL	345-5148
KIT, DEBRIS	596-9034
KIT, GUARDING	584-3877
KIT, TURBO DEBRIS GUARD	587-0678
KIT, ENG AIR INTAKE, PRECLEANER	594-5620
KIT, REMOTE GREASE (COUPLER)	527-2335
KIT, WATER TANK, 44 US GAL, D	571-6876
PACK, DOMESTIC TRUCK	0P-0210
BUCKET-GP, 74", BOCE	279-5373

WARRANTY & COVERAGE

Standard Warranty:	24 Months or 2,000 hour Full Machine
Extended Coverage:	60 month/3,000 hour Premier warranty

SELL PRICE	\$88,000.00
NET BALANCE DUE	\$88,000.00
AFTER TAX BALANCE	\$88,000.00

PRICING REFLECTS NEW YORK STATE BID/SOURCEWELL DISCOUNT**ADD CATERPILLAR BRX318 INDUSTRIAL BRUSHCUTTER FOR \$17,850.00****ADD CATERPILLAR BA118C ANGLE BROOM FOR \$9,300.00**

F.O.B/TERMS:
Kingston

PAYMENT TERMS

Cash Invoice Terms

CASH WITH ORDER	QUOTE SELL PRICE
\$0.00	\$88,000.00

Accepted by _____ on _____

Signature



November 15, 2021

ULSTER COUNTY RESOURCE RECOVERY

PO BOX 6219
KINGSTON, New York 12402

Charlie Wittaker,

Thank you for this opportunity to quote Caterpillar products for your business needs. We are pleased to quote the following for your purchase consideration.

One (1) New Caterpillar Inc Model: 950M-BR Wheel Loader with all standard equipment in addition to the additional specifications listed below:

STOCK NUMBER: **SERIAL NUMBER:** **YEAR:** **SMU:**

We appreciate your interest in H.O. Penn Machinery Co. Inc. and Caterpillar products for your business needs. This quotation is valid for 30 days, and is subject to prior sale. If there are any questions, please do not hesitate to contact me.

Regards,

Scott Cortright
Machine Sales Representative
scortright@hopenn.com
(845) 206-2557

Exhibit B

One (1) New Caterpillar Inc Model: 950M-BR Wheel Loader with all standard equipment in addition to the additional specifications listed below:

STANDARD EQUIPMENT

POWERTRAIN -Engine, Cat C7.1 ACERT -Torque converter, with lock-up clutch -free wheel stator -Transmission countershaft, automatic, -powershift (5F/3R) -Pump transmission, split flow -Productive Economy Mode (fuel -consumption optimization) -Brakes, full hydraulic enclosed wet-disc -with Integrated Braking System (IBS) -Brake wear indicators -Fan drive hydraulic, electronically -controlled, temperature sensing, -on demand -Fuel priming pump (electric) -Fuel/Water separator -Engine air intake with strata-tubes -Parking Brake, disk & caliper

HYDRAULICS -Load sensing system with variable -displacement piston pump. -Hoses, Caterpillar XT -Couplings, Caterpillar O-ring face seal -Hydraulic oil cooler (swing out) -Oil sampling valves -Remote diagnostic pressure taps -Hydraulic Service Center

ELECTRICAL -Batteries (2), maintenance free 1400CCA -Starting and charging system (24V) -Alternator, 115-amp brushed -Alarm, back-up -Ignition key; start/stop switch -Main disconnect switch -Receptacle remote start (cables not -included) -Starter, electric, heavy duty -Emergency shut-off switch -Rear camera -Electrical Service Center

OPERATOR ENVIRONMENT -A-Post mounted membrane 16 switch keypad -Climate control -Bucket/Work tool function lockout -EH Parking Brake -Intermittent front wiper control -Horn, electric -Lights, cab dome (2) -Radio ready (entertainment) includes -antenna, speaker & converters (12V 10A) -3 receptacles, 12V -Beverage holders (2) with storage -compartment for cell phone/MP3 player -Coat hooks (2) -Sliding window -Ergonomic Cab Access -Sun visor, front -Computerized monitoring system -Front dash information display with: --Speedometer/Tachometer --Digital gear indicator --Temperatures: engine coolant, -hydraulic oil, transmission oil --Fuel level -Warning Indicators: --Temperatures: axle oil, engine intake -manifold --Pressures: engine oil, fuel pressure -Hi/Low, primary steering oil, -service brake oil --Battery voltage Hi/Low --Engine air filter restriction --Hydraulic oil filter restriction --Hydraulic oil level low --Parking brake --Transmission filter bypass -Multi-function monitor: --180mm(7") color LCD touch-screen -display --Rear-view camera image display -(reverse travel activated) -Machine utilization information: --Total fuel consumption --Average fuel burn rate --Engine fuel consumption --Total idle time --Total operating hours --Travel distance (odometer) --Total idle fuel --Total operating hours, neutral --Total operating hours with hydraulic -filter in bypass -

OTHER STANDARD EQUIPMENT -Engine idle management system and auto -idle shutdown -Filters: fuel, engine air, engine oil, -hydraulic oil, transmission -Hitch, drawbar -Kickout, lift & tilt, automatic -(adjustable) -Sight gauges: engine coolant, hydraulic -oil, and transmission oil level -Lift and tie down points -Articulation locking bar -Parallel Z-bar lifting

MACHINE SPECIFICATIONS

950M WHEEL LOADER	464-2600
LANE 3 ORDER	0P-9003
REGIONAL PKG, AM-N	543-3587
INDUSTRIAL PACKAGE	513-5391
LINKAGE, HIGH LIFT	538-2777
COUNTERWEIGHT, 1460KG	393-0072
AIR INLET PRECLEANER, TRASH	365-0121
AXLES, AUTO/AUTO, ED, SG	609-7137
HYDRAULICS, 3V RC HL	500-2570
HYDRAULIC OIL, STANDARD	366-9912
STARTING, COLD (120V)	373-3911

LIGHTS, LED, PREMIUM	569-2124
WINDOWS, RUBBER MTD, FRONT GRD	493-9617
STEERING SYST, SECONDARY, WHL	538-2797
LEVERS 3V, STEERING WHEEL	539-6024
SEAT BELT, 3"	551-3397
AUTO DIFF, STEERING WHEEL	384-7005
FILTRATION, STD, ACF PRECLNR	505-1523
CAB TRIM, DELUXE (HMU)	538-2771
RADIO, AM/FM/BLUETOOTH	600-3625
PRODUCT LINK, SATELLITE PLE631	434-0693
COOLING CORES, 6 FPI	521-9359
FAN, REVERSING, VPF, ANSI	513-5393
ANTIFREEZE, -34C (-29F)	371-7064
RIMS ONLY, TIRES OMITTED	373-4064
FENDERS, NARROW	478-8371
HOOD, NON-METALLIC	336-0000
SOUND SUPPRESSION, INDUSTRIAL	488-1138
AUTOLUBE, HL	538-2793
FUEL ANTIFREEZE, -25C (-13F)	0P-3978
SERIALIZED TECHNICAL MEDIA KIT	421-8926
RADIO, CB (READY)	372-1603
SECONDARY CAMERA DISPLAY	380-5964
LIGHTS, REVERSING STROBE	513-2458
LIGHT, WARNING BEACON	491-7467
GUARDS, LIGHT	485-4387
GUARD, TILT CYLINDER	360-8835
GUARD, HINGED, POWERTRAIN	399-4332
OIL CHANGE SYSTEM, HIGH SPEED	503-4735
QUICK COUPLER READY, HL	373-3904
LINES GP-IMPLEMENT 3V (QC)	378-8421
QUICK COUPLER, FUSION	349-5246
FILM, WASTE	468-0171
ROLL ON-ROLL OFF	0P-6619
ALLOWANCE FOR OMISSION	0P-4781
STORAGE PROTECTION	0P-2918
PROTECTION, CYLINDER ROD	0P-3940
CAT 8.0 CUBIC YARD WASTE HANDLING BUCKET WITH BOLT-ON RUBBER EDGE	
CAT 72" FORKS WITH HYDRAULIC ADJUSTABLE TINES	

WARRANTY & COVERAGE

Standard Warranty:	12 Months Full Machine
Extended Coverage:	84 month/10,000 hour Premier warranty

SELL PRICE

\$399,000.00

NET BALANCE DUE
AFTER TAX BALANCE

\$399,000.00
\$399,000.00

PRICING REFLECTS NEW YORK STATE BID/SOURCEWELL DISCOUNT

F.O.B./TERMS:
Kingston

PAYMENT TERMS

Cash Invoice Terms

CASH WITH ORDER	QUOTE SELL PRICE
\$0.00	\$399,000.00

Accepted by _____ on _____

Signature



December 17, 2021

ULSTER COUNTY RESOURCE RECOVERY

PO BOX 6219
KINGSTON, New York 12402

Charlie Whittaker,

Thank you for this opportunity to quote Caterpillar products for your business needs. We are pleased to quote the following for your purchase consideration.

One (1) New Caterpillar Inc Model: 306-07ACWT Excavator with all standard equipment in addition to the additional specifications listed below:

STOCK NUMBER: CY991 **SERIAL NUMBER:** **YEAR:** 2022 **SMU:**

We appreciate your interest in H.O. Penn Machinery Co. Inc. and Caterpillar products for your business needs. This quotation is valid for 30 days, and is subject to prior sale. If there are any questions, please do not hesitate to contact me.

Regards,

Scott Cortright
Machine Sales Representative
scortright@hopenn.com
(845) 206-2557

Exhibit C

One (1) New Caterpillar Inc Model: 306-07ACWT Excavator with all standard equipment in addition to the additional specifications listed below:

MACHINE SPECIFICATIONS

306 07A CR MHE CFG14A	579-2613
DRAIN, ECOLOGY	382-8757
BELT, SEAT, 3" RETRACTABLE	510-6085
ALARM, TRAVEL	511-6170
306 07A CR MINI EXCAVATOR	523-7568
BOOM, SWING	523-7583
ENGINE, EPA TIER 4 FINAL	523-7593
ELECTRICAL ARR, C2.4 HRC	523-8003
TRAVEL PEDALS	541-4573
FILM, COUPLER, ISO	555-8731
SOFTWARE, PROPORTIONAL CONTROL	557-1709
SOFTWARE, STICK STEER CONTROL	557-1710
SOFTWARE, 2 WAY CONTROL	557-1711
SOFTWARE, CODED START	557-1713
LINES, BOOM	532-7892
LINES, STICK	532-7890
LINKAGE BUCKET W/ LIFTING EYE	538-2697
TRACK, 16", RUBBER BELT	527-2800
LIGHTS, STANDARD	522-6498
SEAT, MECH SUSP, FABRIC, CAB	569-7627
RADIO	511-6219
CAMERA, REAR VIEW	522-6505
CAT KEY, WITH PASSCODE OPTION	522-6460
COUNTERWEIGHT, EXTRA	542-6391
BLADE, STD, BOCE	579-2604
INSTRUCTIONS, ANSI	535-8483
SERIALIZED TECHNICAL MEDIA KIT	421-8926
HEATER, WATER JACKET	566-0462
CONTROL, QUICK COUPLER	532-8607
LINES, QC, LNG STK, 3 LINE	532-8634
LANE 3 ORDER	0P-9003
SHIPPING/STORAGE PROTECTION	0P-2266
PACKING, LAST MILE PROGRAM	0P-4299
THUMB, HYD + COUPLER, PG, HYD, 5T	575-0492
ATHENS DEALER PDI & FUEL	590-9288
STICK, LONG	579-2625
PRODUCT LINK, CELLULAR PLE643	522-6503
MONITOR NEXT GEN, CAMERA READY	557-5068
BUCKET-HDC, 12", 2.9 FT3, 5T	464-9914
BUCKET-HDC, 24", 6.4 FT3, 5T	464-9918

BUCKET-GRADING, 47", 9.2FT3,5T

388-9664

WARRANTY & COVERAGE

Standard Warranty: 24 Months or 2,000 hour Full Machine
 Extended Coverage: 60 month/5,000 hour Premier warranty

SELL PRICE	\$87,000.00
NET BALANCE DUE	\$87,000.00
AFTER TAX BALANCE	\$87,000.00

PRICING REFLECTS NEW YORK STATE BID/SOURCEWELL DISCOUNT

F.O.B/TERMS:
 Corporate

PAYMENT TERMS

Cash Invoice Terms

CASH WITH ORDER	QUOTE SELL PRICE
\$0.00	\$87,000.00

Accepted by _____ on _____

 Signature



December 17, 2021

ULSTER COUNTY RESOURCE RECOVERY

PO BOX 6219
KINGSTON, New York 12402

Charlie Whittaker,

Thank you for this opportunity to quote Caterpillar products for your business needs. We are pleased to quote the following for your purchase consideration.

One (1) New Caterpillar Inc Model: 306-07ACWT Excavator with all standard equipment in addition to the additional specifications listed below:

STOCK NUMBER: CY991 **SERIAL NUMBER:** **YEAR:** 2022 **SMU:**

We appreciate your interest in H.O. Penn Machinery Co. Inc. and Caterpillar products for your business needs. This quotation is valid for 30 days, and is subject to prior sale. If there are any questions, please do not hesitate to contact me.

Regards,

Scott Cortright
Machine Sales Representative
scortright@hopenn.com
(845) 206-2557

One (1) New Caterpillar Inc Model: 306-07ACWT Excavator with all standard equipment in addition to the additional specifications listed below:

MACHINE SPECIFICATIONS

306 07A CR MHE CFG14A	579-2613
DRAIN, ECOLOGY	382-8757
BELT, SEAT, 3" RETRACTABLE	510-6085
ALARM, TRAVEL	511-6170
306 07A CR MINI EXCAVATOR	523-7568
BOOM, SWING	523-7583
ENGINE, EPA TIER 4 FINAL	523-7593
ELECTRICAL ARR, C2.4 HRC	523-8003
TRAVEL PEDALS	541-4573
FILM, COUPLER, ISO	555-8731
SOFTWARE, PROPORTIONAL CONTROL	557-1709
SOFTWARE, STICK STEER CONTROL	557-1710
SOFTWARE, 2 WAY CONTROL	557-1711
SOFTWARE, CODED START	557-1713
LINES, BOOM	532-7892
LINES, STICK	532-7890
LINKAGE BUCKET W/ LIFTING EYE	538-2697
TRACK, 16", RUBBER BELT	527-2800
LIGHTS, STANDARD	522-6498
SEAT, MECH SUSP, FABRIC, CAB	569-7627
RADIO	511-6219
CAMERA, REAR VIEW	522-6505
CAT KEY, WITH PASSCODE OPTION	522-6460
COUNTERWEIGHT, EXTRA	542-6391
BLADE, STD, BOCE	579-2604
INSTRUCTIONS, ANSI	535-8483
SERIALIZED TECHNICAL MEDIA KIT	421-8926
HEATER, WATER JACKET	566-0462
CONTROL, QUICK COUPLER	532-8607
LINES, QC, LNG STK, 3 LINE	532-8634
LANE 3 ORDER	0P-9003
SHIPPING/STORAGE PROTECTION	0P-2266
PACKING, LAST MILE PROGRAM	0P-4299
THUMB, HYD + COUPLER, PG, HYD, 5T	575-0492
ATHENS DEALER PDI & FUEL	590-9288
STICK, LONG	579-2625
PRODUCT LINK, CELLULAR PLE643	522-6503
MONITOR NEXT GEN, CAMERA READY	557-5068
BUCKET-HDC, 12", 2.9 FT3, 5T	464-9914
BUCKET-HDC, 24", 6.4 FT3, 5T	464-9918

BUCKET-GRADING, 47", 9.2FT3,5T

388-9664

WARRANTY & COVERAGE

Standard Warranty: 24 Months or 2,000 hour Full Machine
 Extended Coverage: 60 month/5,000 hour Premier warranty

SELL PRICE	\$87,000.00
NET BALANCE DUE	\$87,000.00
AFTER TAX BALANCE	\$87,000.00

PRICING REFLECTS NEW YORK STATE BID/SOURCEWELL DISCOUNT**F.O.B/TERMS:**

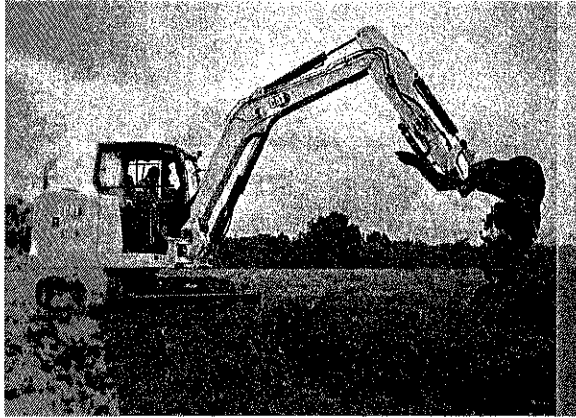
Corporate

PAYMENT TERMS**Cash Invoice Terms**

CASH WITH ORDER	QUOTE SELL PRICE
\$0.00	\$87,000.00

Accepted by _____ on _____

Signature



Cat® 306 CR

MINI HYDRAULIC EXCAVATOR

FEATURES:

The Cat® 306 CR Mini Excavator delivers maximum power and performance in a mini size to help you work in a wide range of applications.

ALL DAY COMFORT

- Your choice of a canopy or a sealed and pressurized cab is equipped with an improved air conditioning system, adjustable wrist rests and a suspension seat to help keep you working comfortably all day long.

EASY TO OPERATE

- Controls are easy to use and the intuitive Next Generation Monitor provides customizable machine operator preferences and easy to read machine information.

STICK STEER TRAVEL MODE

- Moving around the job site is even easier with the Cat Stick Steer option. Easily switch from traditional travel controls with levers and pedals to joystick controls with a push of a button. The benefit of less effort and improved control is in your hands!

BIG PERFORMANCE IN A MINI DESIGN

- Increased lifting, swinging, travel and multi-functioning performance help you get the job done more efficiently.

SAFETY ON THE JOB SITE

- Your safety is our top priority. The Cat Mini Excavator is designed to help keep you safe on the job. An optional back-up camera, courtesy work lights and a fluorescent retractable seat belt are just a few of the safety features we've built into the machine.

SIMPLE SERVICE FOR LESS DOWNTIME

- Maintenance is quick and easy on the Cat Mini Excavator. Routine check points are easy to access at ground level with grouped service points and robust service panels.

LOWER OPERATING COSTS

- Equipped with features such as auto idle, auto engine shutdown, and efficient hydraulics with a variable displacement pump, the Cat Mini Excavator was designed with reducing your operating costs in mind.

CHOICES

- Configure the machine to meet your specific application needs with a straight blade, angle blade, or Extra Tool Carrier (XTC).

UNMATCHED DEALER SUPPORT

- Your Cat dealer is here to help you reach your business goals. From providing equipment solutions to operator training to service needs and beyond, your Cat dealer is ready to help.

Specifications

Engine

Engine Model	Cat C2.4 Turbo	
Rated Net Power @ 2,200 rpm		
U.S. EPA Tier 4 Final/EU Stage V	41.7 kW	55.9 hp
ISO 9249/EEC 80/1269		
Gross Power		
ISO 14396	43.2 kW	57.9 hp
Bore	87 mm	3.4 in
Stroke	102.4 mm	4 in
Displacement	2.43 L	148 in ³

Weights

Minimum Operating Weight with Canopy*	6411 kg	14,136 lb
Maximum Operating Weight with Canopy**	7107 kg	15,671 lb
Minimum Operating Weight with Cab*	6485 kg	14,299 lb
Maximum Operating Weight with Cab**	7175 kg	15,821 lb

*Minimum Weight is based on rubber tracks, operator, full fuel tank, standard stick, blade and bucket.

**Maximum Weight is based on steel tracks, extra counterweight, operator, full fuel tank, long stick, blade and bucket.



306 CR Mini Hydraulic Excavator

Weight Increase from Minimum Configuration

Counterweight	250 kg	551 lb
Long Stick	44 kg	97 lb
Steel Tracks with Pads	375 kg	827 lb
Angle Blade	102 kg	225 lb
XTC Carriage (no tool)	64 kg	141 lb

Travel System

Travel Speed – High	5.0 km/h	3.1 mph
Travel Speed – Low	2.8 km/h	1.7 mph
Maximum Traction Force – High Speed	31 kN	6,969 lbf
Maximum Traction Force – Low Speed	56 kN	12,589 lbf
Ground Pressure – Minimum Weight	35.4 kPa	5.1 psi
Ground Pressure – Maximum Weight	39.1 kPa	5.7 psi
Gradeability (maximum)	30 degrees	

Service Refill Capacities

Cooling System	10.0 L	2.6 gal
Engine Oil	8.0 L	2.1 gal
Fuel Tank	130 L	34.3 gal
Hydraulic Tank	39 L	10.3 gal
Hydraulic System	75 L	19.8 gal

Hydraulic System

Load Sensing Hydraulics with Variable Displacement Piston Pump		
Pump Flow @ 2,400 rpm	173 L/min	46 gal/min
Operating Pressure – Equipment	245 bar	3,553 psi
Operating Pressure – Travel	245 bar	3,553 psi
Operating Pressure – Swing	210 bar	3,046 psi
Auxiliary Circuit – Primary		
Flow	90 L/min	24 gal/min
Pressure	245 bar	3,553 psi
Auxiliary Circuit – Secondary		
Flow	33 L/min	9 gal/min
Pressure	245 bar	3,553 psi
Digging Force – Stick (Standard)	29.5 kN	6,632 lbf
Digging Force – Stick (Long)	26.5 kN	5,957 lbf
Digging Force – Bucket	51.5 kN	11,578 lbf

Swing System

Machine Swing Speed	11 rpm
---------------------	--------

Blade

Straight Blade Width	1980 mm	78 in
Straight Blade Height	390 mm	15.4 in
Angle Blade Width	1980 mm	78 in
Angle Blade Height	400 mm	15.7 in

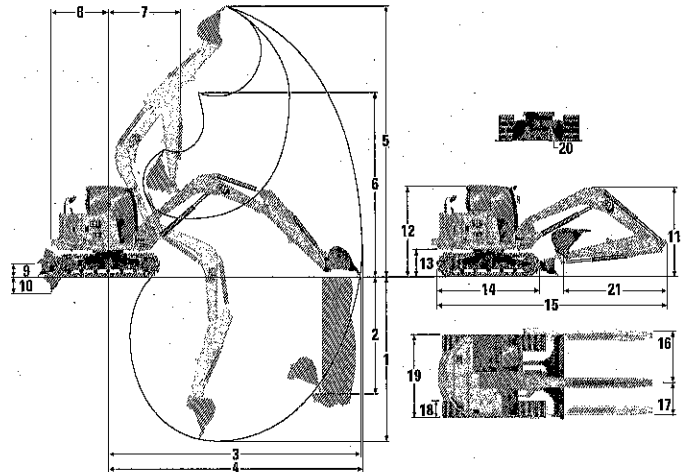
Certification – Cab

Roll Over Protective Structure (ROPS)	ISO 12117-2:2008
Tip Over Protective Structure (TOPS)	ISO 12117:1997
Top Guard	ISO 10262:1998 (Level II)

Sound

Operator Sound Pressure (ISO 6396:2008)	72 dB(A)
Average Exterior Sound Pressure (ISO 6395:2008)	99 dB(A)

• European Union Directive “2000/14/EC”



Dimensions

	Standard Stick	Long Stick
1 Dig Depth	3710 mm (146 in)	4110 mm (162 in)
2 Vertical Wall	2710 mm (107 in)	3165 mm (125 in)
3 Maximum Reach at Ground Level	6130 mm (241 in)	6535 mm (257 in)
4 Maximum Reach	6295 mm (248 in)	6685 mm (263 in)
5 Maximum Dig Height	5835 mm (230 in)	6130 mm (241 in)
6 Maximum Dump Clearance	4325 mm (170 in)	4610 mm (181 in)
7 Boom in Reach	2485 mm (98 in)	2960 mm (117 in)
8 Tail Swing with Counterweight	1475 mm (58 in)	1475 mm (58 in)
Tail Swing without Counterweight	1350 mm (53 in)	1350 mm (53 in)
9 Maximum Blade Height	415 mm (16 in)	415 mm (16 in)
10 Maximum Blade Depth	600 mm (24 in)	600 mm (24 in)
11 Transport Height	1755 mm (69 in)	2410 mm (95 in)
12 Cab Height	2545 mm (100 in)	2545 mm (100 in)
13 Swing Bearing Height	672 mm (26 in)	672 mm (26 in)
14 Overall Undercarriage Length	2580 mm (102 in)	2580 mm (102 in)
15 Overall Shipping Length	5975 mm (235 in)	5950 mm (234 in)
16 Boom Swing Right	910 mm (36 in)	910 mm (36 in)
17 Boom Swing Left	735 mm (29 in)	735 mm (29 in)
18 Track Belt/Shoe Width	400 mm (16 in)	400 mm (16 in)
19 Overall Track Width	1980 mm (78 in)	1980 mm (78 in)
Width Over Upper House	1950 mm (77 in)	1950 mm (77 in)
20 Ground Clearance	306 mm (12 in)	306 mm (12 in)
21 Stick Length	1580 mm (62 in)	1980 mm (78 in)

Air Conditioning System

The air conditioning system on this machine contains the fluorinated greenhouse gas refrigerant R134a (Global Warming Potential = 1287). The system contains 0.9 kg of refrigerant which has a CO₂ equivalent of 1.287 metric tonnes.

306 CR Mini Hydraulic Excavator

Lift Capacities – Minimum Configuration

Lift Point Height			Lift Point radius 3 m (9.8 ft)			Lift Point radius 4.5 m (14.8 ft)			Lift Point radius (Maximum)			
			Over Front			Over Front			Over Front			m (ft)
			Blade Down	Blade Up	Over Side	Blade Down	Blade Up	Over Side	Blade Down	Blade Up	Over Side	
4.5 m (14.8 ft)	Standard Stick	kg (lb)							*1155 (*2,547)	*1155 (*2,547)	*1155 (*2,547)	4.16 (13.6)
3 m (9.8 ft)	Standard Stick	kg (lb)				*1615 (*3,561)	1175 (2,591)	960 (2,117)	*1055 (*2,326)	*1055 (*2,326)	760 (1,676)	5.18 (17.0)
1.5 m (4.9 ft)	Standard Stick	kg (lb)	*3470 (*7,651)	2040 (4,498)	1595 (3,517)	*1945 (*4,289)	1120 (2,470)	905 (1,996)	*1125 (*2,481)	830 (1,830)	675 (1,488)	5.51 (18.1)
0 m (0 ft)	Standard Stick	kg (lb)	*3555 (*7,839)	1955 (4,311)	1515 (3,341)	*2135 (*4,708)	1080 (2,381)	865 (1,907)	*1390 (*3,065)	860 (1,896)	695 (1,532)	5.32 (17.5)

Minimum Weight includes rubber tracks, no extra counterweight, operator, full fuel tank, standard stick, blade and no bucket.

Lift Capacities – Maximum Configuration

Lift Point Height			Lift Point radius 3 m (9.8 ft)			Lift Point radius 4.5 m (14.8 ft)			Lift Point radius (Maximum)			
			Over Front			Over Front			Over Front			m (ft)
			Blade Down	Blade Up	Over Side	Blade Down	Blade Up	Over Side	Blade Down	Blade Up	Over Side	
4.5 m (14.8 ft)	Long Stick	kg (lb)				*1365 (*3,010)	*1365 (*3,010)	1150 (2,536)	*1145 (*2,525)	*1145 (*2,525)	*1145 (*2,525)	4.70 (15.4)
3 m (9.8 ft)	Long Stick	kg (lb)				*1420 (*3,131)	*1420 (*3,131)	1140 (2,514)	*1055 (*2,326)	*1055 (*2,326)	800 (1,764)	5.60 (18.4)
1.5 m (4.9 ft)	Long Stick	kg (lb)				*1780 (*3,925)	1315 (2,900)	1075 (2,370)	*1110 (*2,448)	875 (1,929)	720 (1,588)	5.90 (19.4)
0 m (0 ft)	Long Stick	kg (lb)	*3495 (*7,706)	2275 (5,016)	1785 (3,936)	*2085 (*4,597)	1255 (2,767)	1020 (2,249)	*1310 (*2,889)	900 (1,985)	735 (1,621)	5.73 (18.8)

Maximum Weight includes steel tracks, extra counterweight, operator, full fuel tank, long stick, blade and no bucket.

*The above loads are in compliance with hydraulic excavator lift capacity rating standard ISO 10567:2007 and they do not exceed 87% of hydraulic lifting capacity or 75% of tipping capacity. The excavator bucket weight is not included on this chart.

EQUIPMENT

ENGINE

- Cat C2.4T Diesel Engine (U.S. EPA Tier 4 Final/ EU Stage V) – Electronic Engine, Turbo, Diesel Particulate Filter (DPF)
- Automatic Engine Idle
- Automatic Engine Shutdown
- Automatic Swing Brake
- Automatic Two Speed Travel
- Fuel Water Separator with Indicator
- Radial Seal – Double Element Air Filter

- Side by Side Engine and Hydraulic Oil Cooler
- Extended Life Coolant, -37° C (-35° F)
- Ecology Drain

HYDRAULICS

- Smart Tech Electronic Pump
- Variable Displacement Piston Pump
- Load Sensing/Flow Sharing Hydraulics
- Power On Demand
- Hydraulic Temperature Monitoring

- Certified Accumulator
- Hydro Advanced Hydraulic Oil
- Auxiliary Hydraulic Lines:
 - 1 and 2-way (combined function)
 - Auxiliary Line Quick Disconnects
 - Adjustable Auxiliary Flow
 - Continuous Flow
 - Adjustable Auxiliary Relief

(continued on next page)

306 CR Mini Hydraulic Excavator

EQUIPMENT *(continued)*

OPERATOR ENVIRONMENT

- Canopy or Sealed and Pressurized Cab
- Operator Sound Pressure 72 dB(A)
ISO 6396:2008
- Stick Steer Mode
- Travel Cruise Control
- Control Pattern Changer
- Adjustable Wrist Rests
- Molded Footrests
- Removable, Washable Floor Mat
- Travel Pedals and Hand Levers
- Cat Key with Passcode Option
- Hydraulic Lockout Controls
- High Back, Suspension Seat
- Retractable Seat Belt (75 mm/3 in)
- Coat Hook
- Cup Holder
- Literature Holder
- Mounting Bosses for Top and Front Guards
- ROPS – ISO 12117-2:2008
- TOPS – ISO 12117:1997
- Signaling/Warning Horn
- Cab and (left side) Boom Work Lights
- Utility Space for Mobile Phone

- Color LCD Monitor
 - Fuel Level and Coolant Temperature Gauges
 - Maintenance and Machine Monitoring
 - Performance and Machine Adjustments
 - Numeric Security Code
 - Multiple Languages
 - Camera Ready
 - Hour Meter with Wake Up Switch
 - Jog Dial Control Interface
- Cab Machines Only
 - HVAC with Automatic Temperature Control
 - Integrated Lower Front Window
 - Assisted Front Window Overhead Storage
 - Rear Window Emergency Exit
 - LED Interior Light
 - 12V Power Socket
 - Radio – Bluetooth®, USB, Auxiliary, Microphone
 - Skylight

UNDERCARRIAGE

- Greased and Lubricated Track
- Hydraulic Track Adjusters
- Tie Down Eyes on Track Frame
- Dozer Straight Blade
- Dozer Float
- Bolt-on, Reversible Wear Edge
- Rubber Tracks

BOOM, STICK AND LINKAGES

- One Piece Boom (3055 mm/120.3 in)
- Standard Stick (1580 mm/62.2 in)
- Long Stick (1980 mm/78.0 in)
- Front Shovel Capable (Pin-On/
Manual Coupler/Hydraulic Coupler –
not available in all regions)
- Thumb Ready (not available in all regions)
- Certified Lifting Eye (not available in all regions)

ELECTRICAL

- 12 Volt Electrical System
- 90 Ampere Alternator
- 650 CCA Maintenance Free Battery
- Battery Disconnect
- Circuit Breaker
- Ignition Key Stop Switch
- Signaling/Warning Horn
- Product Link™ Basic (regulations apply,
not available in all regions)
- Travel Alarm

OTHER

- Locks on External Enclosure Doors
- Lockable Fuel Cap
- Beacon Socket
- Rear Reflectors

OPTIONAL EQUIPMENT

OPERATOR ENVIRONMENT

- Cab (see details above)
- Next Generation Advanced Monitor
 - Touch Screen
 - Site Reference System
 - High Definition Camera Capable
- Rain Visor
- Air Suspension Heated Seat with Cab
- Top Guard – ISO 10262:1998 (Level II)

ELECTRICAL

- Product Link Elite (regulations apply,
not available in all regions)
- Rearview Camera
- Rotating Beacon

OTHER

- Attachments including Buckets, Augers
and Hammers
- Angle Blade
- Extra Tool Carrier (XTC)

- Steel Tracks (450 mm/17.7 in wide)
- Steel Track with Rubber Pads
- 2nd Auxiliary Hydraulic Lines
- Additional Counterweight
- Boom and Stick Hose Burst Check Valves
- Bucket Linkage with Lift Eye
- Track Guides
- Water Jacket Heater
- Refueling Pump
- Cab Guarding

For more complete information on Cat products, dealer services, and industry solutions, visit us on the web at www.cat.com

© 2019 Caterpillar
All rights reserved

Materials and specifications are subject to change without notice. Featured machines in photos may include additional equipment. See your Cat dealer for available options.

CAT, CATERPILLAR, LET'S DO THE WORK, their respective logos, "Caterpillar Yellow," the "Power Edge" and Cat "Modern Hex" trade dress as well as corporate and product identity used herein, are trademarks of Caterpillar and may not be used without permission.

AEHQ8236 (08-2019)
(North America, Europe, ANZP)

